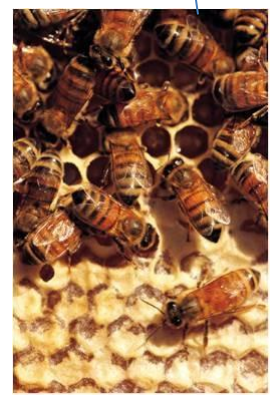
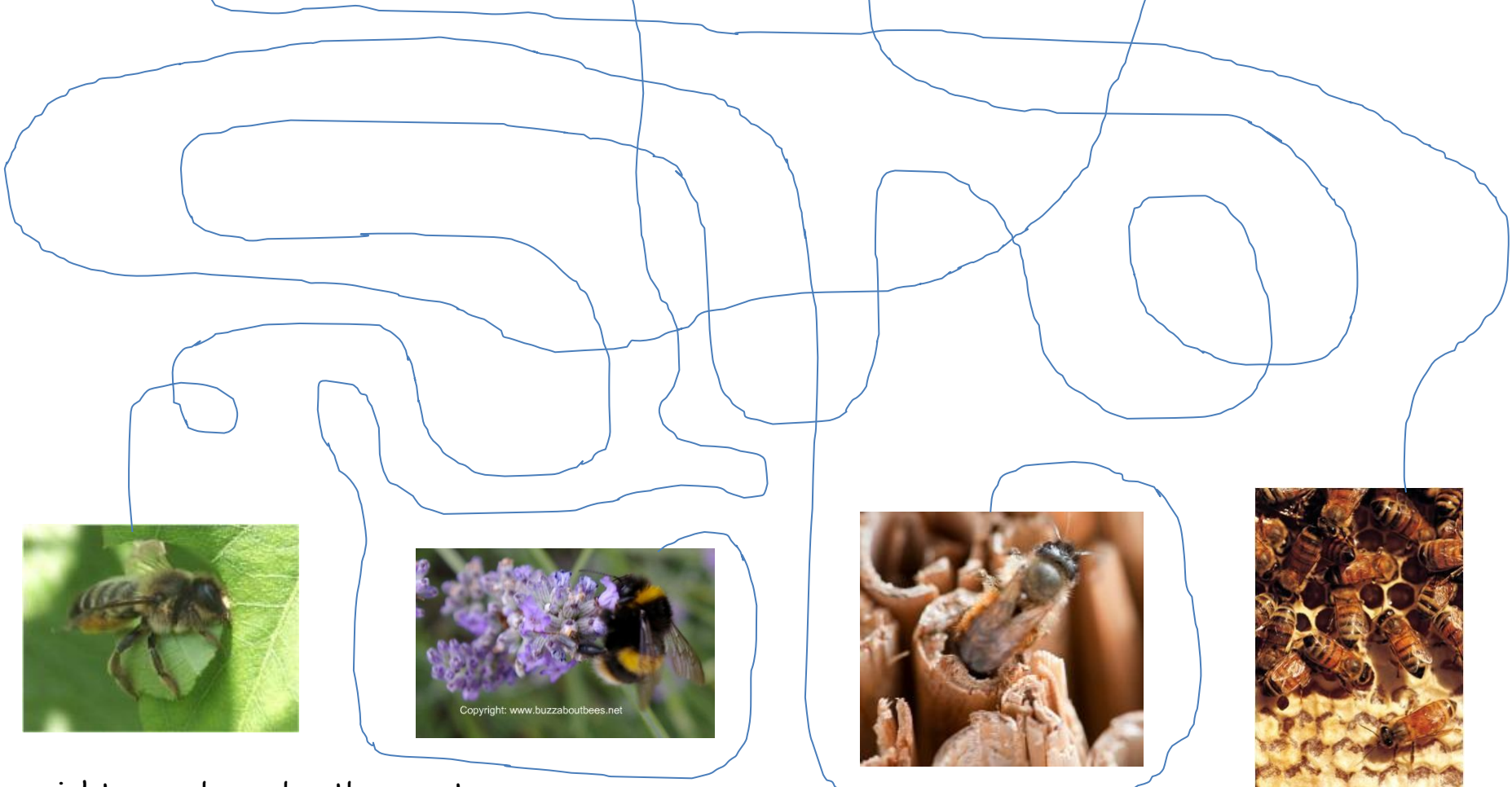
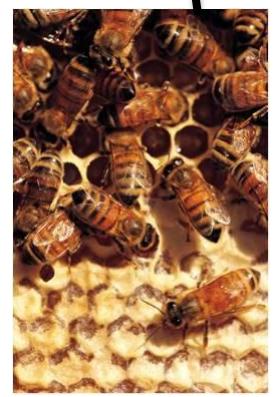


Which image belongs with which bee? Answers on the next page!



For more information about these bees, see the next page!

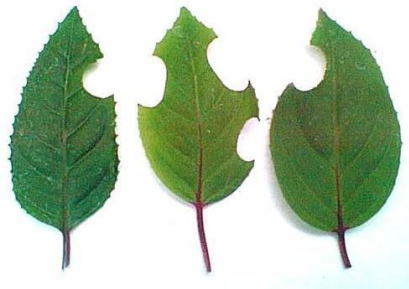




Only honey bees make honey, and they actually make it as a means to store food to feed themselves during winter when they are unable to forage outside in cold, wet weather, and when there are fewer flowers. Each little honey bee only makes about 1 twelfth of a teaspoon of honey in its lifetime! Take a look at the 'honey bee facts' section of www.buzzaboutbees.net for more interesting information.



Many bumblebees love to make their nests in grassy banks, and especially in abandoned mouse holes below hedgerows. Unfortunately, there are not as many hedgerows as there used to be, and there are fewer nest sites for bumblebees. You can help by planting a hedgerow, or by placing an upturned plant pot or old teapot under a garden shed. See www.buzzaboutbees.net for more information.



Leafcutter bees are very charming little creatures. They make their nests by cutting a very neat segment of leaf (this does not harm the plant), which they carry off to their chosen nest site. The nest site might be a hollow cane, plant stem, or a crevice in wood. Watching a bee carry off a piece of leaf that is almost as big as itself, is quite amazing! These pieces of leaf then form the egg cells, and in each cell, an egg is laid, which will hatch and develop into an adult Leafcutter bee.



Mason bees also like to build nests in hollow canes or holes in wood, but they will also build them in crevices and holes in buildings. They are called mason bees, because they gather mud with which to build egg cells. Aren't they clever? You can encourage mason bees and leafcutter bees into your garden, by making a simple nest box for them. For more information, see www.buzzaboutbees.net